



SMITH'S 1938

MOTOR CYCLE ACCESSORIES



CHRONOMETRIC SPEEDOMETER

With new Built-in Lamp for Interior Lighting

Factory Fitted by
all leading British
Motor Cycle
Manufacturers.



Pointer is rock
steady at all
speeds.

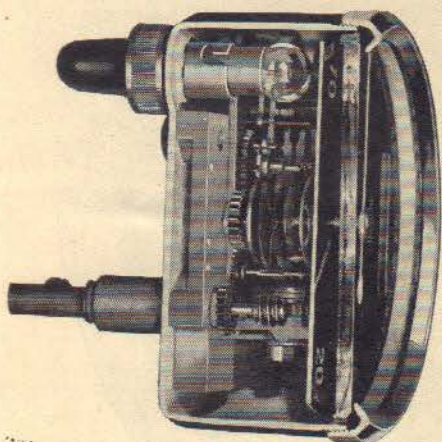
**THE NEW BUILT-IN LAMP FOR NIGHT-RIDERS
IS EXTREMELY NEAT, ACCESSIBLE & WEATHERPROOF.**

Case : Finished Bright Black Enamel.
Bezel : Polished Chromium Plated.
Black Dial White Figures and Pointer.
Bold yellow line at 30m.p.h. position

**Prices : Bracket or Panel fitting Head complete with Drive, comprising Gear Box, Pinion,
Gear Ring and Flexible Cable :—**

Calibrated to 80 miles or 140 kilos Trip	£2 10 0	Calibrated to 120 miles or 180 kilos Trip	£2 15 0
Calibrated to 80 miles or 140 kilos Non-trip	£2 5 0	Calibrated to 120 miles or 180 kilos Non-trip	£2 10 0

IMPORTANT



Sectional view of the Speedometer with built-in lamp. Suitable for Lucas, Miller and Villiers Lighting System.

BUY A BRITISH MOTOR CYCLE, "FACTORY FITTED" WITH A SMITH'S SPEEDOMETER.

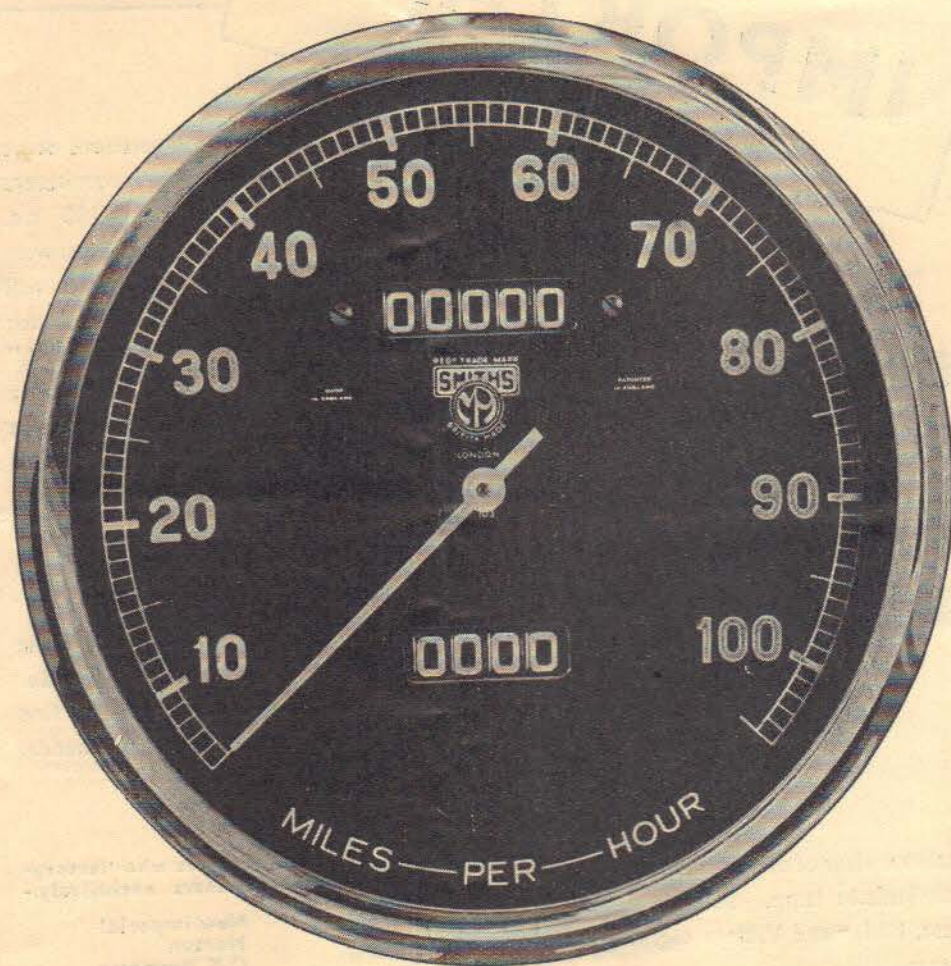
ON October 1st new regulations come into force which compel purchasers of new Motor Cycles over 100 c.c. capacity to equip their machines with a speed indicator. Motor Cyclists will benefit if they buy their machines with Smith's Speedometer "factory-fitted." In this way they are assured of a built-in job—and a uniformly neat fitting. The Speedometer will be tested for accuracy and mechanical efficiency with a thoroughness not so easily possible when it is attached as an afterthought.

Furthermore, if you buy a motor cycle "factory-fitted" with a Smith's Speedometer, you make doubly sure of fine workmanship and good performance.

Motor Cycle manufacturers who "factory-fit" Smith's Speedometers exclusively:-

Ariel	New Imperial
A.J.S.	Norton
A.J.W.	O.K. Supreme
B.S.A.	O.E.G.
Brough	Phelon & Moore
Coventry Eagle	Rudge
Calthorpe	S.O.S.
Cotton	Scott
Enfield	Sunbeam
Excelsior	Stevens
James	Triumph
Levis	Velocette
Matchless	Vincent H.R.D.
Montgomery	Zenith

SMITH'S FIVE-INCH CHRONOMETRIC SPEEDOMETER



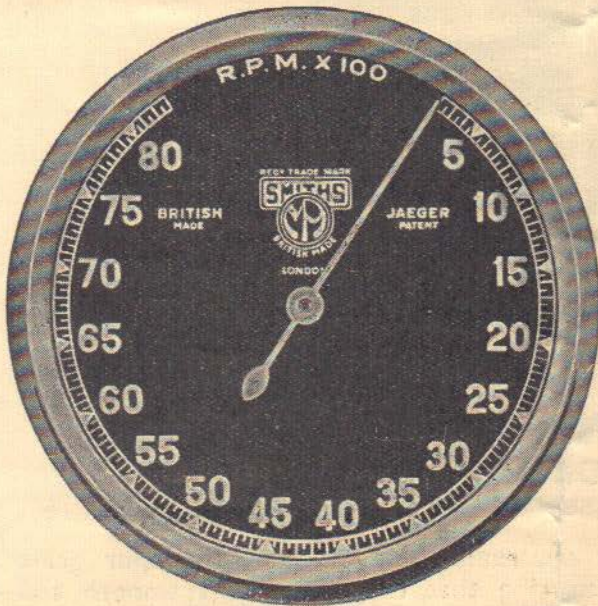
A new large dial **Chronometric Speedometer**, specially designed for fast machines where rapid sight reading is so necessary. Calibrated to 100 m.p.h. Supplied with black dial, well-defined figures and pointer, chromium plated rim.

TRIP TYPE ONLY

Price, complete with Drive ... £5 5 0



SMITH'S REVOLUTION INDICATORS



The Smith Revolution Indicator is invaluable to sports and racing riders, gives a rock-steady reading of engine revolutions throughout its range, and thus guarding the engine against over revving in the intermediate gears.

The instrument is of robust construction, designed and tested to withstand the severe conditions of motor cycle work.

CHRONOMETRIC REVOLUTION INDICATOR

Uniform in size and style with the Smith Chronometric Speedometer.

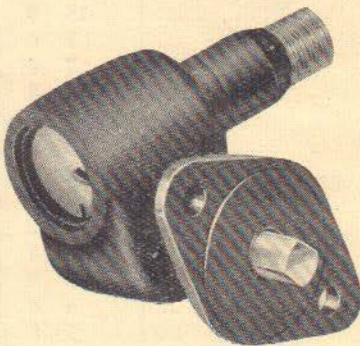
Calibration 8,000 r.p.m., 2—1 ratio.

Type R.C.53. Price 63/-

Complete with flexible drive and right-angle gearbox.

RIGHT-ANGLE GEAR BOX

As supplied with revolution indicators.



GOVERNOR TYPE REVOLUTION INDICATOR

In this design a new form of centrifugal governor is employed which gives the widest speed readings on the dial in the high register, just where they are most needed for rapid sight reading.

A swivelling clip allows the front of the instrument to be set on the handlebars at the most convenient angle of vision.

Finished in Black enamel. Black dial with White figures and pointer.

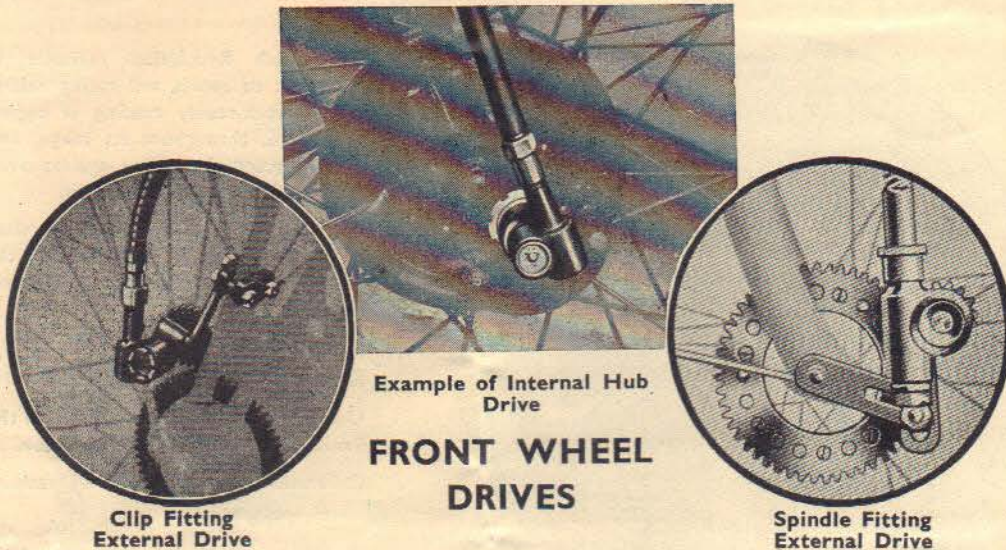
Diameter 82 mm.

Calibrated to 8,000 r.p.m., 2—1 ratio.

Price including right-angle gear box and flex. 63/-



SMITH'S MOTOR CYCLE SPEEDOMETER DRIVES



Example of Internal Hub Drive

FRONT WHEEL DRIVES

Clip Fitting
External Drive

Spindle Fitting
External Drive

The **Smith Speedometer** drives are remarkably efficient, the spur gears being cut by a special method ensuring that the working is smooth and practically noiseless.

SPARE PARTS FOR MOTOR CYCLE DRIVE	PRICE
Speedometer Head, 80 m.p.h. or 140 k.p.h. Trip type.	£1 10 0
Speedometer Head, 80 m.p.h. or 140 k.p.h. Non-trip type.	1 5 0
Speedometer Head, 120 m.p.h. or 180 k.p.h. Trip type.	1 15 0
Speedometer Head, 120 m.p.h. or 180 k.p.h. Non-trip type....	1 10 0
Gear Box Complete	15 0
Special Brackets (where necessary)... ..	7 6
Gear Ring and Clips for Front Wheel Drive	7 6
Gear Ring only, less Clips	5 0
Gear Ring for Internal Hub Drive	7 6
Pinion (up to 22T) for Front Wheel Drive	3 6
Back Wheel Drive (less Flex)	1 10 0
Back Wheel Gear Ring	7 6
Back Wheel Gear Box Pinion 27T Unbushed	4 6
Outer Flex up to 1' 6"	5 0
Outer Flex up to 2' 6"	6 0
Outer Flex up to 3' 9"	6 6
Inner Flex up to 1' 6"	5 0
Inner Flex up to 2' 6"	6 0
Inner Flex up to 3' 9"	6 6

When ordering spares please state make and year of motor cycle, also number and letters on speedometer dial.

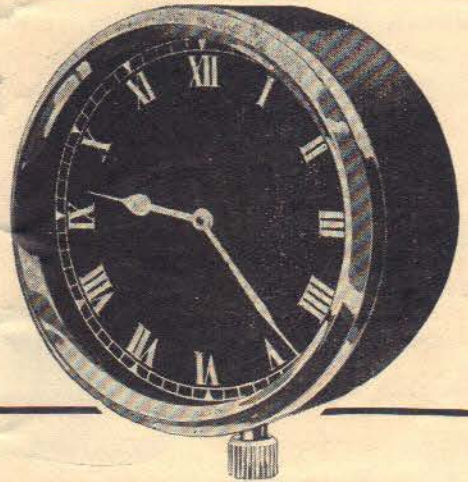
SMITH'S MOTOR CYCLE CLOCKS

Smith's Fork Head Fitting Clock

The 8-day high grade jewelled lever movement is fitted into a case which is designed to withstand the exposed weather conditions inseparable from motor cycle work. Uniform in size and style with the Smith Chronometric Speedometer with which it can be mounted. See page 8.

Type C.55. Price 35/-

Complete with bracket for fork head or handlebar fitting.



Smith's Panel-Type Clock

This is the ideal timepiece for use in Instrument Panels, the case being slotted for concealed lighting. The movement is the famous 8-day jewelled lever type, which is unaffected by vibration. The winding stem is arranged at different positions to suit the panel for which required.

Finished with Black dial and Chromium plated rim. **Type A.321. Price 30/-**

Smith's 8-day Handlebar Fitting Clock

Our latest type Handlebar Clock, fitted with finest quality 8-day jewelled lever movement, specially constructed to withstand the heavy road shocks to which it is subjected.

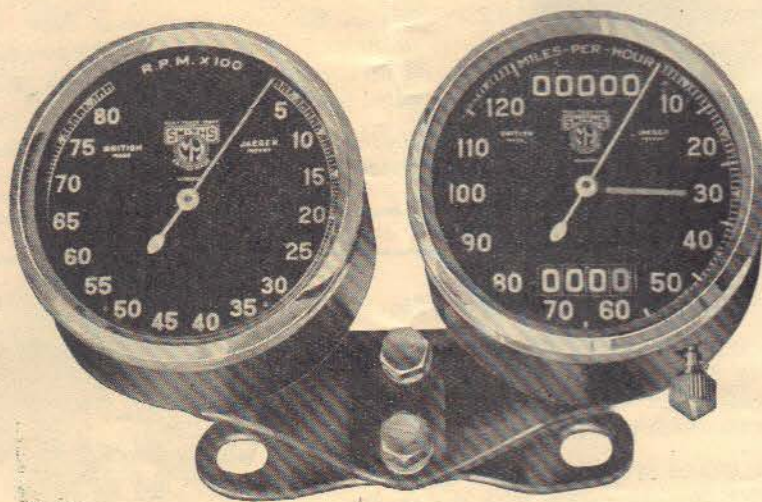
The clock is locked in its holder and cannot be removed from position except with the special key provided. The case is completely proof against dust and damp. Finished with Black dial and Chromium rim. **Type A.399. Price 30/-**



CHRONOMETRIC
SPEEDOMETER AND 8-DAY CLOCK



CHRONOMETRIC DESIGN
SPEEDOMETER AND REV-INDICATOR



Illustrated example of two instruments mounted side by side on the fork head by means of the special bracket shown.

THE SMITH PEDAL CYCLE SPEEDOMETER AND MILEAGE RECORDER



Here is a Speedometer specially made for pedal cyclists which is equal in quality to the remarkably accurate instruments produced for the motorist and motor cyclist. The enthusiastic cyclist will find in the Smith Cycle Speedometer an endless source of interest—he can check, with an accuracy which even maps cannot give, the mileage over certain stretches and the average speeds he can attain. For racing cyclists and touring cyclists alike, this little instrument will prove a valuable addition to their equipment.

A handsome Chromium bezel surrounds the plain Black, easy-to-read dial, and the body is in stylish matt surface Black enamel. For either 24", 26" or 28" wheels.

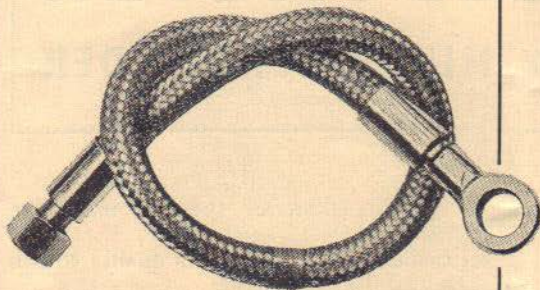
Flexible shaft supplied in 21", 23", 24", 25" and 27" lengths.

Type A.1506 Miles per hour dial
Type A.1506K Kilos per hour dial

PRICE
19'6
COMPLETE

Petro-Flex

Unbreakable Flexible Tubing

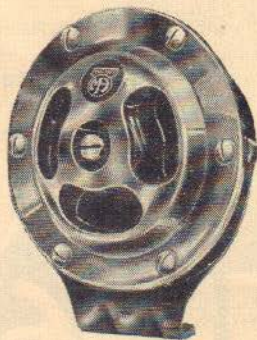


Fitted as standard by many of the leading manufacturers, including Norton, Rudge, Sunbeam, Velocette.

Petro-Flex meets the need for a light weight flexible tubing which is unaffected by vibration and impervious to the action of petrol, benzole and hydrocarbon oils.

It is continually being adopted not only to meet vibration but also where sharp bends, twisted pipe leads and other difficulties present themselves, and is therefore particularly suited to motor cycle work.

SMITH'S "MEDALLION" ELECTRIC HORN



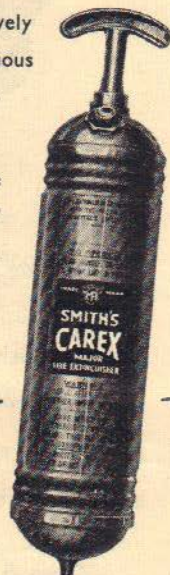
This is our latest design, being of the popular high frequency type. Supplied with either Black or Chromium plated dome, complete with push-button, clip and angle bracket. Diameter 4 in.

Type E.27x 6 or 12 volt. Price 22/6

SMITH'S "CAREX" Fire Extinguisher

The Carex Fire Extinguisher is the most efficient fire-fighting weapon that modern science can devise. Besides being instantaneous in action, it can be used effectively in any position, and ejects a continuous jet of liquid on both upward and downward strokes of the pump.

The liquid, being non-conductive, can be used with absolute safety on "shorts." Supplied complete with special bracket which holds it firmly in position until required, when it can be released immediately.



PRICES		
Type G.513 Major Model (Quart size).	Type G.512 Minor Model (Pint size).	
Polished Brass...	35/-	22/6
Nickel Plated ...	37/6	25/-
Chromium Plated	40/-	28/6
Refills: Type G.515,	6/6	
Type G.514,	4/6	

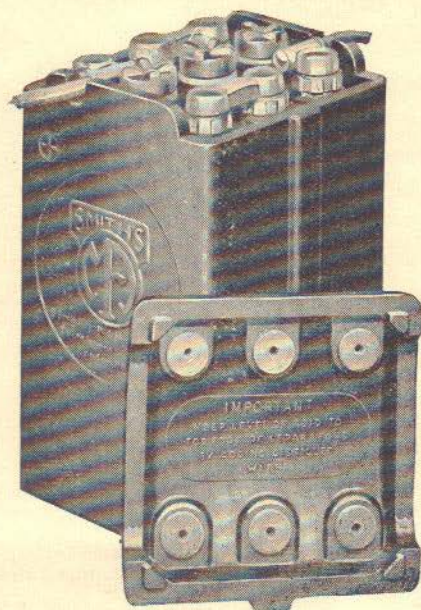
SMITH'S MOTOR CYCLE BATTERIES



Type 3-ML5

The Smith Motor Cycle Battery is designed specially to withstand the vibration and difficult weather conditions inevitable with every machine.

One of the outstanding features is an improved moulding method, which gives greater acid space, allows the use of thicker separators, and strengthens the container. All parts are of very robust construction, the vents being carefully designed to make "spraying" impossible, yet allow gases an easy exit.



Type 3-ML7

SMITH'S BATTERIES FOR MAXIMUM POWER AND LIFE

Type	Volts	Actual Capacity in Amperes Hours		Overall Dimensions in Inches			PRICE (Uncharged) s. d.
		20 hr.	10 hr.	L.	W.	H.	
3-ML5	6	9	8	3 $\frac{11}{16}$	3 $\frac{3}{16}$	6 $\frac{3}{16}$	16 6
3-ML7	6	13 $\frac{1}{2}$	12	4 $\frac{1}{2}$	3 $\frac{1}{16}$	6 $\frac{3}{16}$	19 6
3-MN5	6	10	9	6 $\frac{1}{16}$	2 $\frac{15}{16}$	7	19 6
3-AMR7	6	13 $\frac{1}{2}$	12	6 $\frac{3}{4}$	3 $\frac{9}{16}$	6 $\frac{3}{16}$	£1 3 0

Solo Fittings 5/- extra.

Moulded Cover included for Motor Cycle Batteries.